



Winners Announced for “Tiny Library 2025 Architecture Competition”

Archetype team - 04/09/2025

International design competition platform Volume Zero has announced the results of the Tiny Library 2025 Architecture Competition.

The competition challenged its participants to rethink and re-imagine the idea of the Library as a 21st-century self-learning and educational incubation space that not only sheds light on conventional means of knowledge but also encourages its users to interact, share ideas, and grow together. Participants were required to design a Tiny Library optimized for 50 users with engaging multifunctional spaces for all ages and spatial experience, where they need to choose a site in a rural or remote context for the proposal, wherever they feel accessibility to knowledge may change the existing circumstance and the structure should not exceed 300 sq.mt of built-up

area.

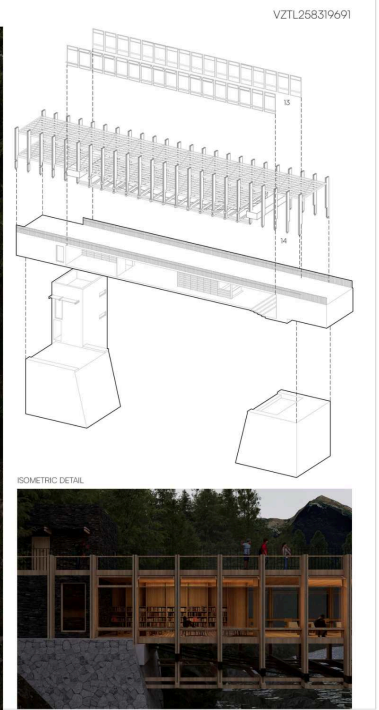
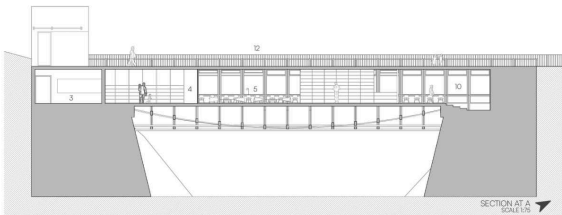
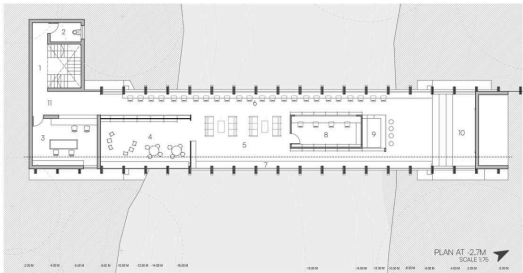
Participants from more than 45 countries contributed valuable concept ideas to the contest, which was evaluated by a panel of international experts.

Volume Zero Competition thanks all the competitors for participating in this competition and for contributing to this competition's research.

The esteemed jury for judging this competition consisted of Avinash Ankalge (A Threshold), Petchimuthu Kennedy (Earthscape Studio), Swapnil Valvatkar (Collage Architecture Studio), Chen Xi (Atelier Xi), Peter Rich (Peter Rich Architects), ChenchenHu (HCCH Studio), Soumitro Ghosh (Mathew and Ghosh Architects), Song Yehao (THAD SUP Atelier), Bernardo Quinzaños (CCA Centro de Colaboración Arquitectónica), David Barragán (Al Borde).

The top three winners and Best Student were awarded total prize money of \$4,500, while ten entries received Honorable Mentions. Here are the winning entries. (The full result for the competition the **Tiny Library 2025 Architecture Competition** can be found [here](#).)

FIRST PLACE
Crossword - K Shashavindu
India



Location: Agoda, a remote village in India, where geography shapes daily life. Residents must traverse vast river valleys on foot to access essential services. For young children, this journey especially to school—becomes a daily burden. This design reimagines the bridge not just as a connector of places, but as a catalyst for change.

Bridges connect communities and are integral to our social fabric, but they can do more. By embedding a library within the bridge itself, the design merges movement with learning, creating a dual-purpose structure that serves both physical and intellectual needs. Bridge construction is often costly and disruptive to communities and the environment, so this proposal seeks to maximize public investment and expand social value.

Building in remote locations presents logistical challenges, especially for infrastructure like bridges. Transporting materials can be prohibitively expensive. To address this, the design utilizes locally sourced materials. The structure is supported by multiple tensioned steel cables, with internal cross-bracing managing axial loads—offering both stability and economy.

It connects people to knowledge, brings the village closer, and turns a tough journey into something inspiring.

Annotations

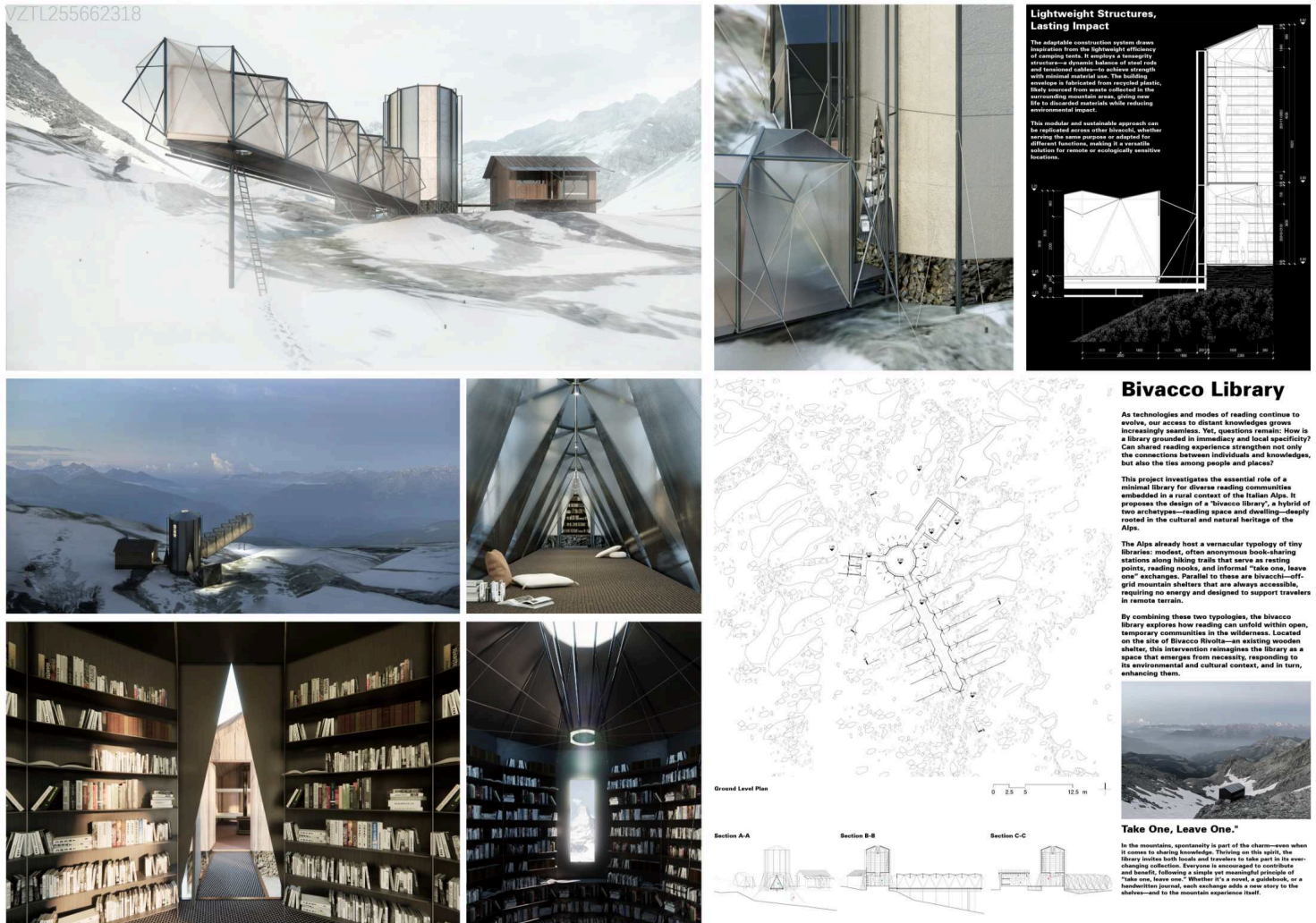
1-Sharcase core	2-Teller
3-Admin	4-Kids library
5-Lounge	6-Study tables
7-Seating/bench	8-Digital library
9-pantry	10-Community gathering
11-Lobby	12-Crossbridge
13-Windows	14-Structural bracings

Agoda, a remote village in India, where geography shapes daily life. Residents must traverse vast river valleys on foot to access essential services. For young children, this journey especially to school - becomes a daily burden. This design reimagines the bridge not just as a connector of places, but as a catalyst for change.

Bridges connect communities and are integral to our social fabric, but they can do more. By embedding a library within the bridge itself, the design merges movement with learning. Creating a dual - purpose structure that serves both physical and intellectual needs. Bridge construction is often costly and disruptive to communities and the environment, so this proposal seeks to maximize public investment and expand social value.

SECOND PLACE

Bivacco Library - Jinyue Hu & Xiang Li
United Kingdom



As technologies and modes of reading continue to evolve, our access to distant knowledges grows increasingly seamless. Yet, questions remain: How is a library grounded in immediacy and local specificity? Can shared reading experience strengthen not only the connections between individuals and knowledges, but also the ties among people and places?

This project investigates the essential role of a minimal library for diverse reading communities embedded in a rural context of the Italian Alps. It proposes the design of a “bivacco library”, a hybrid of two archetypes—reading space and dwelling—deeply rooted in the cultural and natural heritage of the Alps.

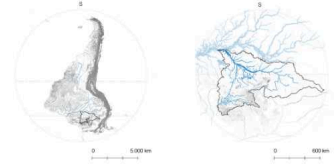
THIRD PLACE

Barcoteca - Lucas Karmann & Jean Pfrunner
Brazil

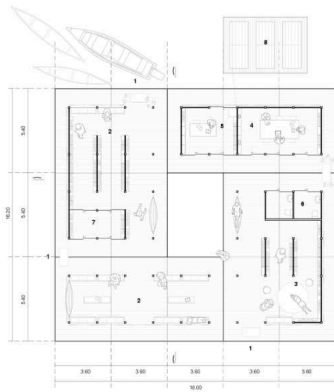
BARCOTECA MODULAR FLOATING LIBRARY

Barcoteca is a new word, blending **barco** (boat) and **biblioteca** (library), to represent a mobile, water-borne cultural infrastructure. The **Rio Negro** basin, nestled in the heart of the **Amazon** rain forest, is a vast and isolated territory where mobility is limited and access is possible only by boat. Indigenous, riverine, and Quilombola communities rely entirely on the river for transport, communication, and survival. In this region, the State of Amazonas has only **19 public libraries**, an average of one for every 170,000 people, leaving most inhabitants without access to books or educational resources.

...The site: South America and Rio Negro



...Library plan



Module area: 19.44 m²
Number of modules: 14

Total area: 272.16 m²
Usable area: 272.16 m²

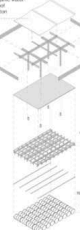
...South elevation



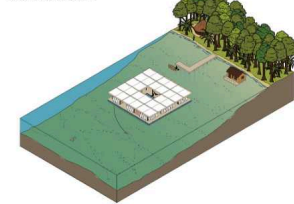
...Wood fitting



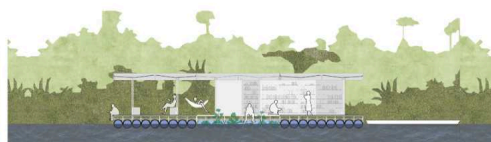
...Exploded module



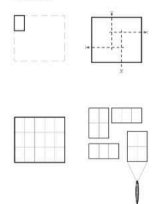
...Water and ground relations



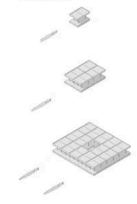
...Transversal section



...Modulation



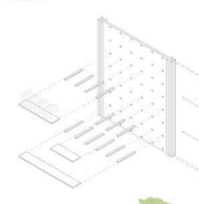
...Transportation



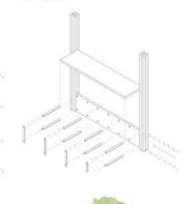
...Longitudinal section



...Bookshelf



...Reading bench



Barcoteca is a new word, blending barco (boat) and biblioteca (library), to represent a mobile, water-borne cultural infrastructure.

The Rio Negro basin, nestled in the heart of the Amazon rain forest, is a vast and isolated territory where mobility is limited and access is possible only by boat. Indigenous, riverine, and Quilombola communities rely entirely on the river for transport, communication, and survival.

In this region, the State of Amazonas has only 19 public libraries, an average of one for every 170,000 people, leaving most inhabitants without access to books or educational resources.

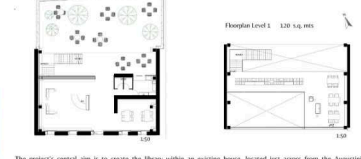
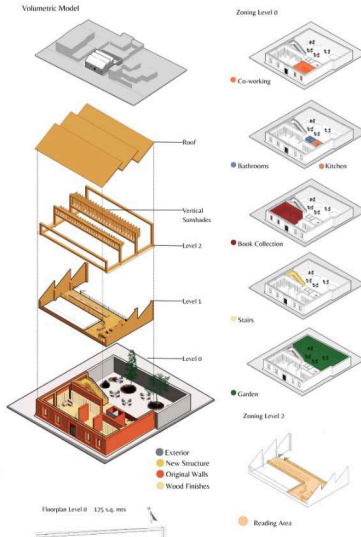
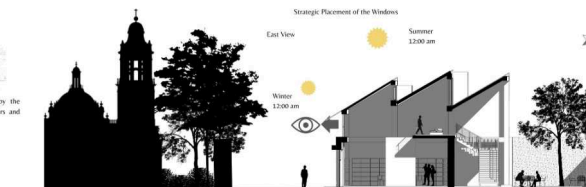
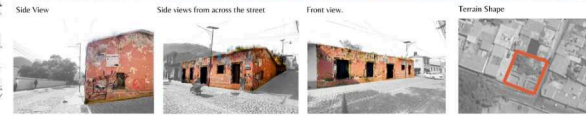
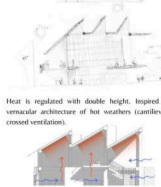
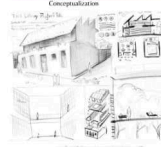
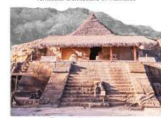
This project proposes a modular floating library that combines vernacular building knowledge with contemporary parametric design tools.

STUDENT AWARD

Amoxcalli - Carlos Francisco Nava Martinez
Mexico

This project envisions a 300-square-meter library in Malinalco, a small town nestled in the heart of Mexico. Renowned for its Aztec temple ruins—once a sacred space for the preparation of warriors before the Conquest—Malinalco breathes history and ritual. The town later grew around the San Salvador Augustinian Convent, layering colonial heritage over ancient memory.

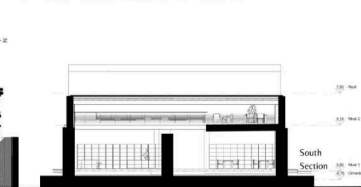
Over time, these rich narratives have shaped an economy centred on tourism, drawing visitors from afar. Yet, behind this cultural tapestry lies a quiet need: the local population remains underserved, particularly in access to educational infrastructure. This library seeks to redress that imbalance—to create a space not just for book, but belonging, learning, and the weaving of new knowledge into the fabric of a storied place.



The project's central aim is to create the library within an existing house, located just across from the Augustinian Convent. By rehabilitating this structure, the new building can nestle more gently into the historic landscape, honoring the architectural rhythm of the town.

The original facade and internal framework are not erased but embraced—they become the foundation upon which the new design rises. The proposed structure employs cross-laminated timber, sourced locally from Malinalco, chosen not only for its strength but for its sensitivity: it preserves the old stone face, and with it, the memory embedded in the walls. This material is also a more ecological solution, aligning the project with both environmental and cultural stewardship.

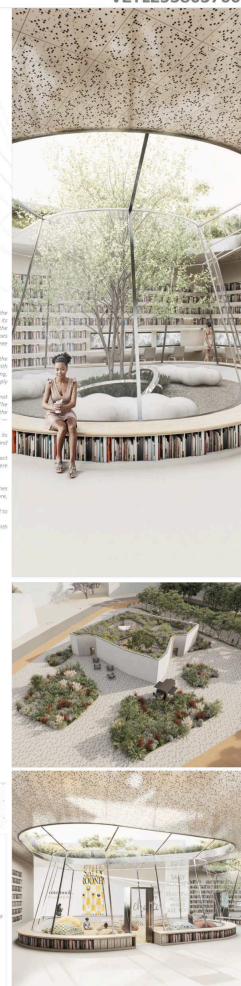
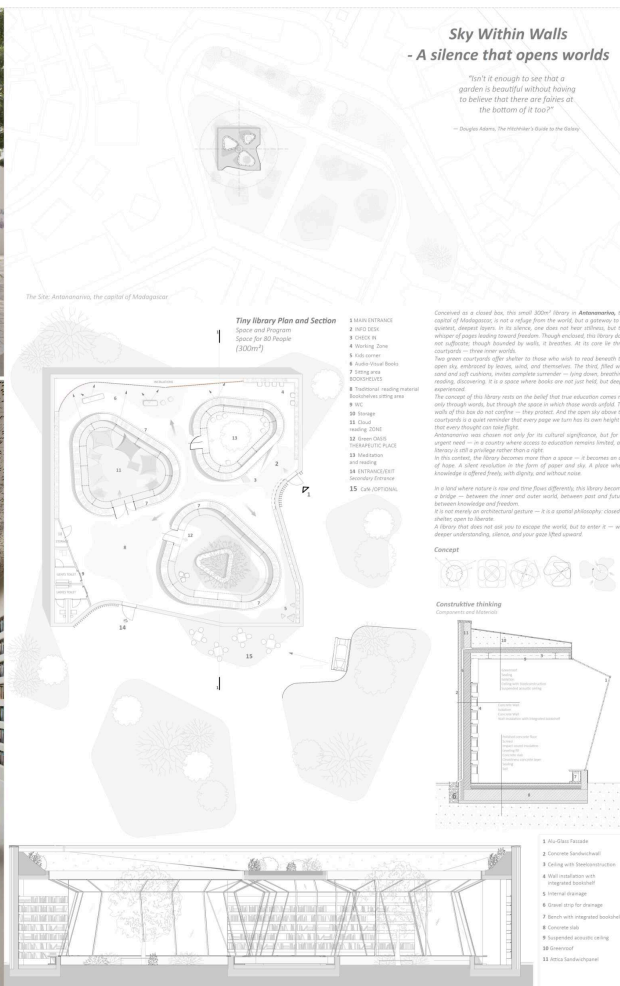
In its quiet presence, the library becomes more than a building—it becomes a gesture toward the future. Rooted in history, shaped by necessity, and built with care, it offers a place where stories are not only read but lived. At a time when shared spaces are more vital than ever, this library stands as a center for gathering, learning, and weaving community—where the past meets the present, and knowledge becomes a common ground.



This project envisions a 300-square-meter library in Malinalco, a small town nestled in the heart of Mexico. Renowned for its Aztec temple ruins—once a sacred space for the preparation of warriors before the Conquest—Malinalco breathes history and ritual. The town later grew around the San Salvador Augustinian Convent, layering colonial heritage over ancient memory.

Over time, these rich narratives have shaped an economy centred on tourism, drawing visitors from afar. Yet, behind this cultural tapestry lies a quiet need: the local population remains underserved, particularly in access to educational infrastructure. This library seeks to redress that imbalance—to create a space not just for book, but belonging, learning, and the weaving of new knowledge into the fabric of a storied place.

Honourable Mentions:
Honourable Mention 1: Sky Within Walls
 Gregor Hufnagl & Jovana Milojevic
 Austria



Honourable Mention 2: Finding in Self-Confirmation

Feng Yibo, Liu Qian & Zhang Yitian

China

Finding in Self-confirmation

The Value Reconstruction of Rural Libraries

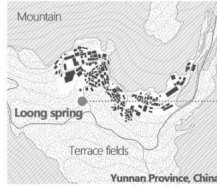
From multi-ton stone to paper weigh less than a feather, from grandeur palace hall to a single device in pocket, the new carrier allows human to produce and propagate standardized knowledge. In this new era when information explosion co-exist with solidified value system, the role of library has changed from sacred temple to a campfire in local places, to help people find the unique value of oneself, as achieve self-confirmation.

The project located in Lacoudian village in Yunnan, China, where Yi ethnic group has lived in for more than 400 years. Based on a natural spring that local residents call "Loong Spring", they've figured out a way to co-exist with the nature. Lacoudian village is 4km away from the nearest school, it's been an issue for local kids to gain education. With the trend of youths leaving village and work in downtown, this situation is becoming increasingly serious. By building a community space more than just a library, this project aims to remind local people of the unique wisdom and value in the village, and eventually find their self-confirmation in this process. By cognizing the diversity of value and life, we hope the uniqueness of this village could be seen, thus reverse the rural hollowing as well as improve the current situation for Lacoudian village, offer an opportunity to connect with the world and find true self.

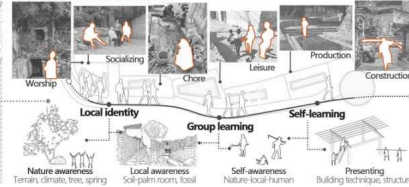
CONCEPT ABOUT LIBRARY



LOCATION



PATH OF DAILY LIFE & SELF-CONFIRMATION



MASTERPLAN 1:1000



PLANVIEW 1:100



1. Community Reading Room
2. Tea Bar
3. Group Reading Room
4. Team Reading Room
5. Self-reading Room
6. Reading Terrace
7. Observation Deck
8. Banyan Garden
9. Restroom
10. Source of Loong Spring
11. Pond for daily use
12. Pond for playing
13. Pond for production

RENDERING



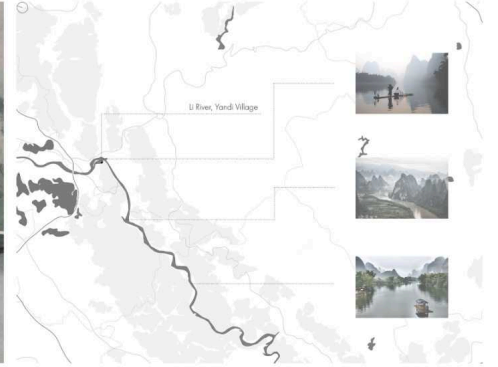
ELEVATION 1:100

God grows weary of great kingdoms, but never of little flowers. — Stray Birds

Honourable Mention 3: Wisdom flow

Milana Yanbukhtina & Elena Lvova

Russia



Wisdom flow

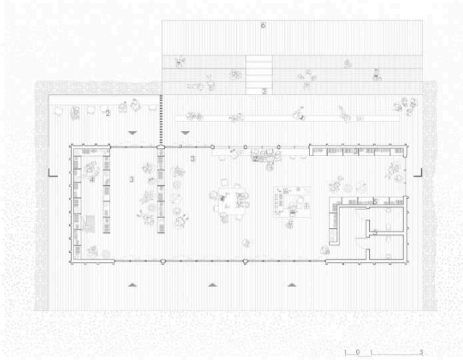
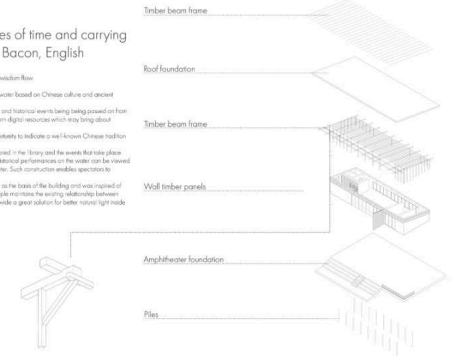
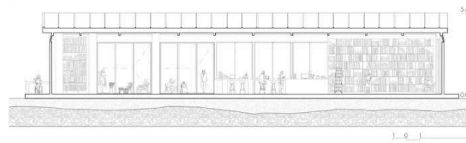
"Books are the ships of thoughts wandering through the waves of time and carrying their precious cargo from generation to generation." Francis Bacon, English

The waters of the river flow through all of ages of writing knowledge, wisdom and legends, carrying them all in one place - the wisdom flow. The library is located close to Yandi Village in China, on the west bank of a river. The public space of not only for books, but also serve as a multi-functional space hosting guests for performances on the water based on Chinese culture and ancient legends. Ancient Chinese myths and legends were orally transmitted through word of mouth, with no written records, myths, legends, and historical events being passed on from generation to generation. The library building will have a book point, housing collection of books and periodicals as well as modern digital resources which may long about resources such as that data, film and academic learning. Besides, the library provides the local, especially children, with a place to get knowledge from the outside world. It is a great opportunity to introduce and know Chinese tradition called "Cultivation and reading is to benefit to the family". The library building is designed for both children and for people who want to immerse themselves in work. The historical performances on the water can be viewed from the inside space of the library. This is the first time in the world that the library has been built on the water. The library is a model of a modern library in the region, which is completely new, temporary, friendly. A wooden frame was taken as the basis of the building and was inspired of that used in ancient Chinese temples. Floor-to-ceiling windows and glass door panels were used in the project. This design principle maintains the existing relationship between interior and exterior by connecting the inner reading space with the unique values that surround it. Moreover, this technique will provide a great solution for better natural light inside the library.

Exploration:
1. Reception
2. Covering area
3. Seating area

4. Storage area
5. Bathroom
6. Amphitheater

The total area of this space is 107 m².



Honourable Mention 4: Shelter Library

Park Garam & Choi Yeonsoo

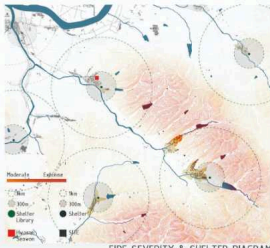
Korea South

SHELTER LIBRARY

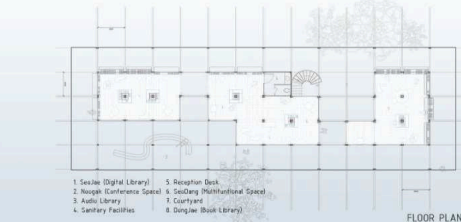
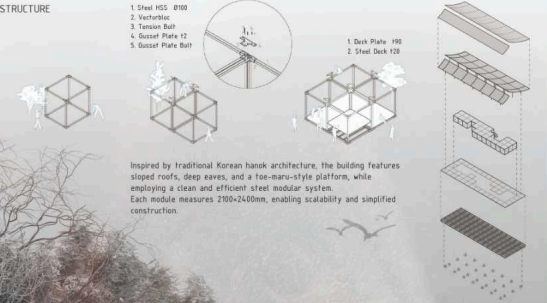
SITE : 167, Sanghwa-ri, Danchon-myeon, Ulsong-gun, Gyeongsangbuk-do, Republic of Korea
SITE ANALYSIS : In 2025, a massive wildfire swept across Ulsong, Gyeongsangbuk-do, devastating the forest and displacing local residents. The fire destroyed Hwasan Seowon, a historic Confucian academy that symbolized the cultural identity of the area. During the disaster, existing shelters were scarce and too small to accommodate evacuees. In response, this project proposes a small yet resilient community library that doubles as an emergency shelter—offering both a place for everyday gathering and refuge in times of crisis.

Core Functions
1. Community Hub – A daily gathering space for learning, sharing, and care.
2. Disaster Shelter Conversion – Rapid transformation into a shelter using fire shutters, sprinklers, and an underfloor emergency storage system.
3. Active Fire Protection – Sloped roof to deflect falling debris and a sprinkler system connected to a nearby reservoir.

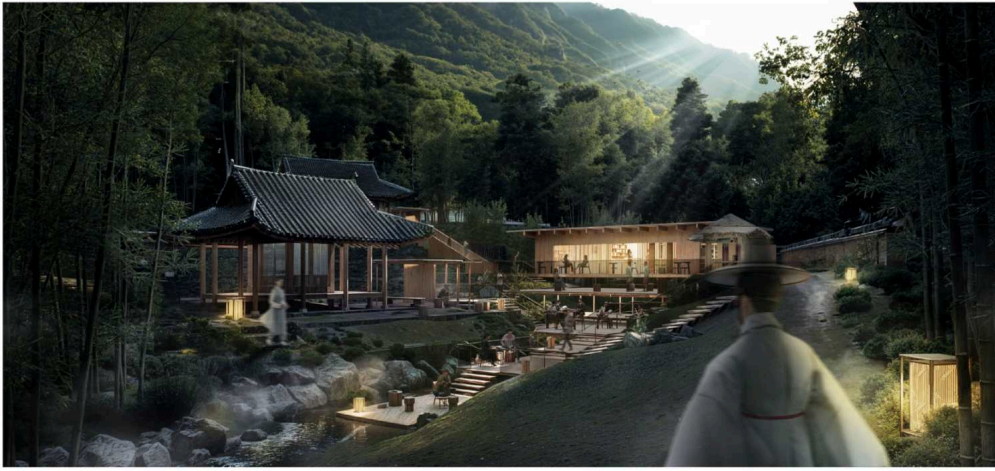
This modest library offers an architectural foundation for continued communal life even in the aftermath of disaster.



FIRE SEVERITY & SHELTER DIAGRAM



Honourable Mention 5: Connecting Generations, Through Time.
Song Jieun & Yun Seobin
Korea South



HIDE IN THE SOSWAEWON:

CONNECTING GENERATIONS, THROUGH TIME.

"Tiny" does not simply refer to physical volume; it is a concept that invites us to reconsider the essence of space, knowledge, and experience. In imitation, we find depth. Rather than standing in the foreground, it steps back—quietly becoming part of the background. By choosing to be small, it breathes in harmony with nature. Through this lens, the philosophizing and spirit of Soswaewon are carried forward through the medium of a tiny library. It is a space where generations naturally meet, converse, and reflect. Much like the aesthetics of Soswaewon—subtle, hidden, and immersed—the tiny library becomes a place that connects thoughts and stories across time.

Proposal

Clam is not a manifestation, but a deep-seated thought that flows from the heart, quietly stepping back.

The library is a space that connects generations and stories across time.

User of a Space

Residents of various ages living near Soswaewon and residents of Danyang City with poor access to education.

Library Programs

The library presents programs bridging past and present, including an audiobook space with sounds of Soswaewon and traditions from the Joseon Dynasty. It also features an outdoor deck for immersive reading and nature.

Site Selection

Name: Soswaewon
Address: 123 Jigok-ro, Gyeongsangbuk-do, South Korea
Total Area: Approximately 4,000m²

Site Selection: A map showing the location of Soswaewon in the Gyeongsangbuk-do region, highlighting its proximity to the city of Danyang.

Site Selection: A map showing the location of Soswaewon in the Gyeongsangbuk-do region, highlighting its proximity to the city of Danyang.

Site Selection: A map showing the location of Soswaewon in the Gyeongsangbuk-do region, highlighting its proximity to the city of Danyang.

Site Selection: A map showing the location of Soswaewon in the Gyeongsangbuk-do region, highlighting its proximity to the city of Danyang.

Site Selection: A map showing the location of Soswaewon in the Gyeongsangbuk-do region, highlighting its proximity to the city of Danyang.

Site Selection: A map showing the location of Soswaewon in the Gyeongsangbuk-do region, highlighting its proximity to the city of Danyang.

Site Selection: A map showing the location of Soswaewon in the Gyeongsangbuk-do region, highlighting its proximity to the city of Danyang.

Site Selection: A map showing the location of Soswaewon in the Gyeongsangbuk-do region, highlighting its proximity to the city of Danyang.

Site Selection: A map showing the location of Soswaewon in the Gyeongsangbuk-do region, highlighting its proximity to the city of Danyang.

Site Selection: A map showing the location of Soswaewon in the Gyeongsangbuk-do region, highlighting its proximity to the city of Danyang.

Site Selection: A map showing the location of Soswaewon in the Gyeongsangbuk-do region, highlighting its proximity to the city of Danyang.

Site Selection: A map showing the location of Soswaewon in the Gyeongsangbuk-do region, highlighting its proximity to the city of Danyang.

Site Selection: A map showing the location of Soswaewon in the Gyeongsangbuk-do region, highlighting its proximity to the city of Danyang.

Site Selection: A map showing the location of Soswaewon in the Gyeongsangbuk-do region, highlighting its proximity to the city of Danyang.

Site Selection: A map showing the location of Soswaewon in the Gyeongsangbuk-do region, highlighting its proximity to the city of Danyang.

Site Selection: A map showing the location of Soswaewon in the Gyeongsangbuk-do region, highlighting its proximity to the city of Danyang.

Site Selection: A map showing the location of Soswaewon in the Gyeongsangbuk-do region, highlighting its proximity to the city of Danyang.

Site Selection: A map showing the location of Soswaewon in the Gyeongsangbuk-do region, highlighting its proximity to the city of Danyang.

Site Selection: A map showing the location of Soswaewon in the Gyeongsangbuk-do region, highlighting its proximity to the city of Danyang.

Site Selection: A map showing the location of Soswaewon in the Gyeongsangbuk-do region, highlighting its proximity to the city of Danyang.

Site Selection: A map showing the location of Soswaewon in the Gyeongsangbuk-do region, highlighting its proximity to the city of Danyang.

Site Selection: A map showing the location of Soswaewon in the Gyeongsangbuk-do region, highlighting its proximity to the city of Danyang.

Site Selection: A map showing the location of Soswaewon in the Gyeongsangbuk-do region, highlighting its proximity to the city of Danyang.

Site Selection: A map showing the location of Soswaewon in the Gyeongsangbuk-do region, highlighting its proximity to the city of Danyang.

Site Selection: A map showing the location of Soswaewon in the Gyeongsangbuk-do region, highlighting its proximity to the city of Danyang.

Site Selection: A map showing the location of Soswaewon in the Gyeongsangbuk-do region, highlighting its proximity to the city of Danyang.

Site Selection: A map showing the location of Soswaewon in the Gyeongsangbuk-do region, highlighting its proximity to the city of Danyang.

Site Selection: A map showing the location of Soswaewon in the Gyeongsangbuk-do region, highlighting its proximity to the city of Danyang.

Site Selection: A map showing the location of Soswaewon in the Gyeongsangbuk-do region, highlighting its proximity to the city of Danyang.

Site Selection: A map showing the location of Soswaewon in the Gyeongsangbuk-do region, highlighting its proximity to the city of Danyang.

Site Selection: A map showing the location of Soswaewon in the Gyeongsangbuk-do region, highlighting its proximity to the city of Danyang.

Site Selection: A map showing the location of Soswaewon in the Gyeongsangbuk-do region, highlighting its proximity to the city of Danyang.

Site Selection: A map showing the location of Soswaewon in the Gyeongsangbuk-do region, highlighting its proximity to the city of Danyang.

Site Selection: A map showing the location of Soswaewon in the Gyeongsangbuk-do region, highlighting its proximity to the city of Danyang.

Site Selection: A map showing the location of Soswaewon in the Gyeongsangbuk-do region, highlighting its proximity to the city of Danyang.

Site Selection: A map showing the location of Soswaewon in the Gyeongsangbuk-do region, highlighting its proximity to the city of Danyang.

Site Selection: A map showing the location of Soswaewon in the Gyeongsangbuk-do region, highlighting its proximity to the city of Danyang.

Site Selection: A map showing the location of Soswaewon in the Gyeongsangbuk-do region, highlighting its proximity to the city of Danyang.

Site Selection: A map showing the location of Soswaewon in the Gyeongsangbuk-do region, highlighting its proximity to the city of Danyang.

Site Selection: A map showing the location of Soswaewon in the Gyeongsangbuk-do region, highlighting its proximity to the city of Danyang.

Site Selection: A map showing the location of Soswaewon in the Gyeongsangbuk-do region, highlighting its proximity to the city of Danyang.

Site Selection: A map showing the location of Soswaewon in the Gyeongsangbuk-do region, highlighting its proximity to the city of Danyang.

Site Selection: A map showing the location of Soswaewon in the Gyeongsangbuk-do region, highlighting its proximity to the city of Danyang.

Site Selection: A map showing the location of Soswaewon in the Gyeongsangbuk-do region, highlighting its proximity to the city of Danyang.

Site Selection: A map showing the location of Soswaewon in the Gyeongsangbuk-do region, highlighting its proximity to the city of Danyang.

Site Selection: A map showing the location of Soswaewon in the Gyeongsangbuk-do region, highlighting its proximity to the city of Danyang.

Site Selection: A map showing the location of Soswaewon in the Gyeongsangbuk-do region, highlighting its proximity to the city of Danyang.

Site Selection: A map showing the location of Soswaewon in the Gyeongsangbuk-do region, highlighting its proximity to the city of Danyang.

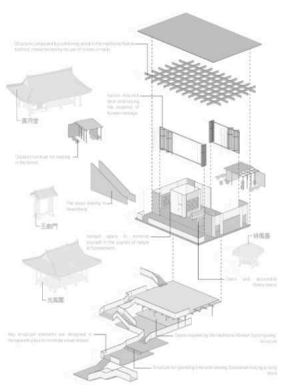
Site Selection: A map showing the location of Soswaewon in the Gyeongsangbuk-do region, highlighting its proximity to the city of Danyang.

CONCEPT



Our tiny library gently nestles into the landscape of Soswaewon, beginning a contemplative journey in harmony with nature. Passing through, along, and over the landscape, one senses the hidden breath of nature in this way, within Soswaewon, we connect generations and enter—beginning a new chapter of reflection.

ISOMETRIC



Honourable Mention 6: Tibet Sand Mandala

Wang Lan & Li Yujie
China



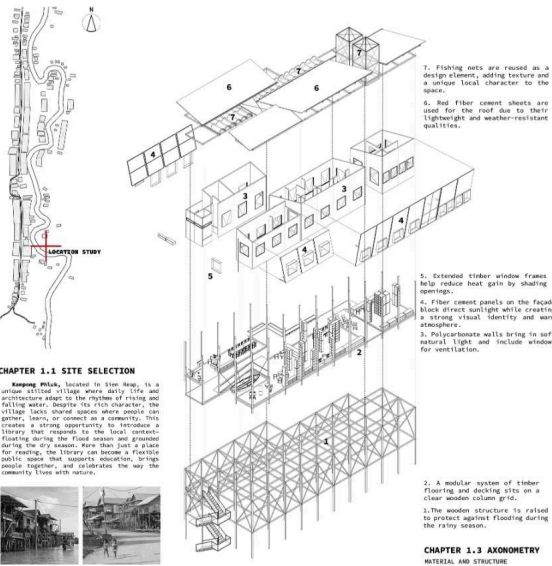
Honourable Mention 7: Shelter of Light

Vengseng Chiv & Dany Rith

Cambodia

CHAPTER ONE: SHELTER OF LIGHT

"In every corner of this shelter, light becomes more than brightness—it becomes knowledge, hope, and a gentle guide for a new beginning."

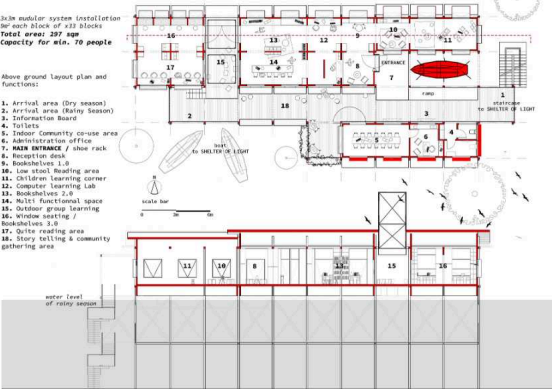


CHAPTER 1.1 SITE SELECTION

Kampung Melayu, located in Klang, is a unique village where daily life and architecture adapt to the rhythm of rising and falling water. Despite its rich character, the village lacks shared spaces where people can gather, learn, or connect as a community. This creates a strong opportunity to introduce a library that responds to the local context. Floating during the flood season and grounded during the dry season, here, more than just a place for reading, the library can become a flexible public space that supports education, social support, and community life.



CHAPTER 1.4 PLAN AND SECTION



Above ground layout plan and functions:

1. Arrival area (Dry season)
2. Arrival area (Rainy Season)
3. Information Board
4. Toilets
5. Indoor Community co-use area
6. Administration office
7. MAIN ENTRANCE / shoe rack
8. Reception desk
9. Bookshelves 1.0
10. Low stool Reading area
11. Children Learning corner
12. Computer Learning Lab
13. Bookshelves 2.0
14. Multi Functional space
15. Outdoor group Learning
16. Window seating / Bookshelves 3.0
17. Quiet reading area
18. Story telling & community gathering area



CHAPTER 1.2 THE LIGHT

Chapter One: Shelter of Light is a modular library designed with adaptability as its core capable of being built in a wide range of environments, from dry terrain to flood-prone landscapes. Whether in rural villages, urban outskirts, or water-side communities, the design offers a resilient and expandable solution for community growth. This project marks the beginning of a 'chapter one' of a new community space that endures light as both a physical and symbolic shelter. Based on a sturdy wooden grid, the building adapts to flood conditions while offering flexibility through its modular system, allowing future growth. Translucent polycarbonate panels flood the interior with soft, natural light, creating an inviting atmosphere for learning and connection. Beyond its form, this library represents a first chapter—where architecture, light, and community come together to spark learning and shared growth.

Honourable Mention 8: Canyon Codex
Darshan Dilipkumar, Shubham Negi & Priyanka Kalita
India



The Learning Kiln

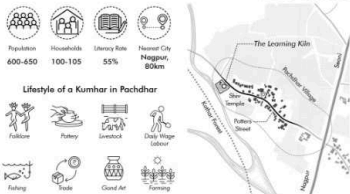
A library built by the hands of potters, shaping minds, hands, and memory. A place where ideas are shaped, skills are strengthened, and knowledge is fired into resilience.

Nestled in the heart of central India, Pachdhur is more than a village, it is where earth and hand share a quiet understanding. Here, the soil is not just walked upon; it is kneaded, shaped, and fired into memory.

Proximity to Panch National Park allows the Kumbhar (potters) of the village to be seen by the world, yet within the village, books, open spaces, and learning spaces flourish. As youth migrate for work, the craft risks being left behind.

The Learning Kiln is a tiny library, conceived as a space of transformation—just like the kiln that stands at the heart of every potter's practice. This vessel of knowledge is not enclosed or enclosed—it spills into the community, just as the heat of a kiln warms the courtyard around it. It invites silence to speak, children to listen, potters to teach, and visitors to engage.

More than a place for reading, the library nurtures community, sparks ideas, and honors tradition. Tucked between the village temple and a gentle stream, it reimagines what it means to learn, gather, and grow. The threshold—between what and how—where the library begins.



Lifestyle of a Kumbhar in Pachdhur

Follows Pottery Lived Clay Water Pottery

Clay Tiles

Roof Covering

Semi Circular Vault

Walls

Floor

Platform

Internal Partitions

Clay Tiles

Clay Tiles

Clay Tiles

Clay Tiles

Clay Tiles

Clay Tiles

Clay Tiles

Clay Tiles

Clay Tiles

Clay Tiles

Clay Tiles

Clay Tiles

Clay Tiles

Clay Tiles

Clay Tiles

Clay Tiles

Clay Tiles

Clay Tiles

Clay Tiles

Clay Tiles

Clay Tiles

Clay Tiles

Clay Tiles

Clay Tiles

Clay Tiles

Clay Tiles

Clay Tiles

Clay Tiles

Clay Tiles

Clay Tiles

Clay Tiles

Clay Tiles

Clay Tiles

Clay Tiles

Clay Tiles

Clay Tiles

Clay Tiles

Clay Tiles

Clay Tiles

Clay Tiles

Clay Tiles

Clay Tiles

Clay Tiles

Clay Tiles

Clay Tiles

Clay Tiles

Clay Tiles

Clay Tiles

Clay Tiles

Clay Tiles

Clay Tiles

Clay Tiles

Clay Tiles

Clay Tiles

Clay Tiles

Clay Tiles

Clay Tiles

Clay Tiles

Clay Tiles

Clay Tiles

Clay Tiles

Clay Tiles

Clay Tiles

Clay Tiles

Clay Tiles

Clay Tiles

Clay Tiles

Clay Tiles

Clay Tiles

Clay Tiles

Clay Tiles

Clay Tiles

Clay Tiles

Clay Tiles

Clay Tiles

Clay Tiles

Clay Tiles

Clay Tiles

Clay Tiles

Clay Tiles

Clay Tiles

Clay Tiles

Clay Tiles

Clay Tiles

Clay Tiles

Clay Tiles

Clay Tiles

Clay Tiles

Clay Tiles

Clay Tiles

Clay Tiles

Clay Tiles

Clay Tiles

Clay Tiles

Clay Tiles

Clay Tiles

Clay Tiles

Clay Tiles

Clay Tiles

Clay Tiles

Clay Tiles

Clay Tiles

Clay Tiles

Clay Tiles

Clay Tiles

Clay Tiles

Clay Tiles

Clay Tiles

Clay Tiles

Clay Tiles

Clay Tiles

Clay Tiles

Clay Tiles

Clay Tiles

Clay Tiles

Clay Tiles

Clay Tiles

Clay Tiles

Clay Tiles

Clay Tiles

Clay Tiles

Clay Tiles

Clay Tiles

Clay Tiles

Clay Tiles

Clay Tiles

Clay Tiles

Clay Tiles

Clay Tiles

Clay Tiles

Clay Tiles

Clay Tiles

Clay Tiles

Clay Tiles

Clay Tiles

Clay Tiles

Clay Tiles

Clay Tiles

Clay Tiles

Clay Tiles

Clay Tiles

Clay Tiles

Clay Tiles

Clay Tiles

Clay Tiles

Clay Tiles

Clay Tiles

Clay Tiles

Clay Tiles

Clay Tiles

Clay Tiles

Clay Tiles

Clay Tiles

Clay Tiles

Clay Tiles

Clay Tiles

Clay Tiles

Clay Tiles

Clay Tiles

Clay Tiles

Clay Tiles

Clay Tiles

Clay Tiles

Clay Tiles

Clay Tiles

Clay Tiles

Clay Tiles

Clay Tiles

Clay Tiles

Clay Tiles

Clay Tiles

Clay Tiles

Clay Tiles

Clay Tiles

Clay Tiles

Clay Tiles

Clay Tiles

Clay Tiles

Clay Tiles

Clay Tiles

Clay Tiles

Clay Tiles

Clay Tiles

Clay Tiles

Clay Tiles

Clay Tiles

Clay Tiles

Clay Tiles

Clay Tiles

Clay Tiles

Clay Tiles

Clay Tiles

Clay Tiles

Clay Tiles

Clay Tiles

Clay Tiles

Clay Tiles

Clay Tiles

Clay Tiles

Clay Tiles

Clay Tiles

Clay Tiles

Clay Tiles

Clay Tiles

Clay Tiles

Clay Tiles

Clay Tiles

Clay Tiles

Clay Tiles

Clay Tiles

Clay Tiles

Clay Tiles

Clay Tiles

Clay Tiles

Clay Tiles

Clay Tiles

Clay Tiles

Clay Tiles

Clay Tiles

Clay Tiles

Clay Tiles

Clay Tiles

Clay Tiles

Clay Tiles

Clay Tiles

Clay Tiles

Clay Tiles

Clay Tiles

Clay Tiles

Clay Tiles

Clay Tiles

Clay Tiles

Clay Tiles

Clay Tiles

Clay Tiles

Clay Tiles

Clay Tiles

Clay Tiles

Clay Tiles

Clay Tiles

Clay Tiles

Clay Tiles

Clay Tiles

Clay Tiles

Clay Tiles

Clay Tiles

Clay Tiles

Clay Tiles

Clay Tiles

Clay Tiles

Clay Tiles

Clay Tiles

Clay Tiles

Clay Tiles

Clay Tiles

Clay Tiles

Clay Tiles

Clay Tiles

Clay Tiles

Clay Tiles

Clay Tiles

Clay Tiles

Clay Tiles

Clay Tiles

Clay Tiles

Clay Tiles

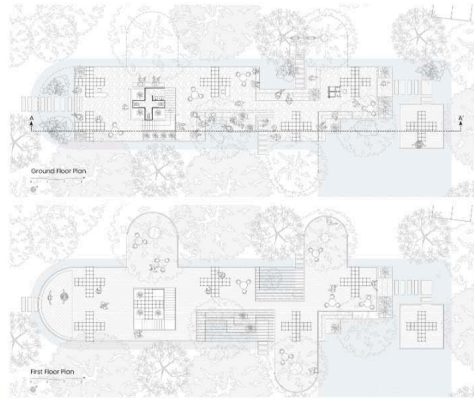
Clay Tiles

Clay Tiles

Clay Tiles

Canopy of Commons

Community, Education, and Upliftment Beneath One Roof



Context and Site

Majuli, located in **Assam, India**, is the world's largest river island, rich in cultural traditions like mask-making and weaving. However, it faces increasing **vulnerability to flooding** and erosion. Between 2000 and 2020, an estimated **30-40% of households migrated**, highlighting the need for resilient, **community-rooted spaces**. The proposed site, **near LP Anguri School and a temple**, ensures high footfall and supports both educational and cultural activities.

Concept

Surrounded by tall trees, the design **mimics tree canopies** using **bamboo**, allowing it to **blend into its natural surroundings**. The structure symbolizes protection, resilience, and growth.

Design Response

The library is raised to the first floor for **flood safety**, while the ground floor remains open for **community events** in dry months. A basic **flood alert system** is integrated. The space adapts seasonally, doubling as a flexible venue for local gatherings.

Construction & Participation

Built from **450 mm modular bamboo units**, the structure is **lightweight, scalable, and easy to assemble**. A **DIY guide** and **connector system** enable **local participation**, making the library a **community-built and owned space**. This process fosters a sense of pride, skill-sharing, and **collective identity** in a vulnerable landscape.

